

# Northern Maritime University (NMU)

A project idea by

Thomas Pawlik

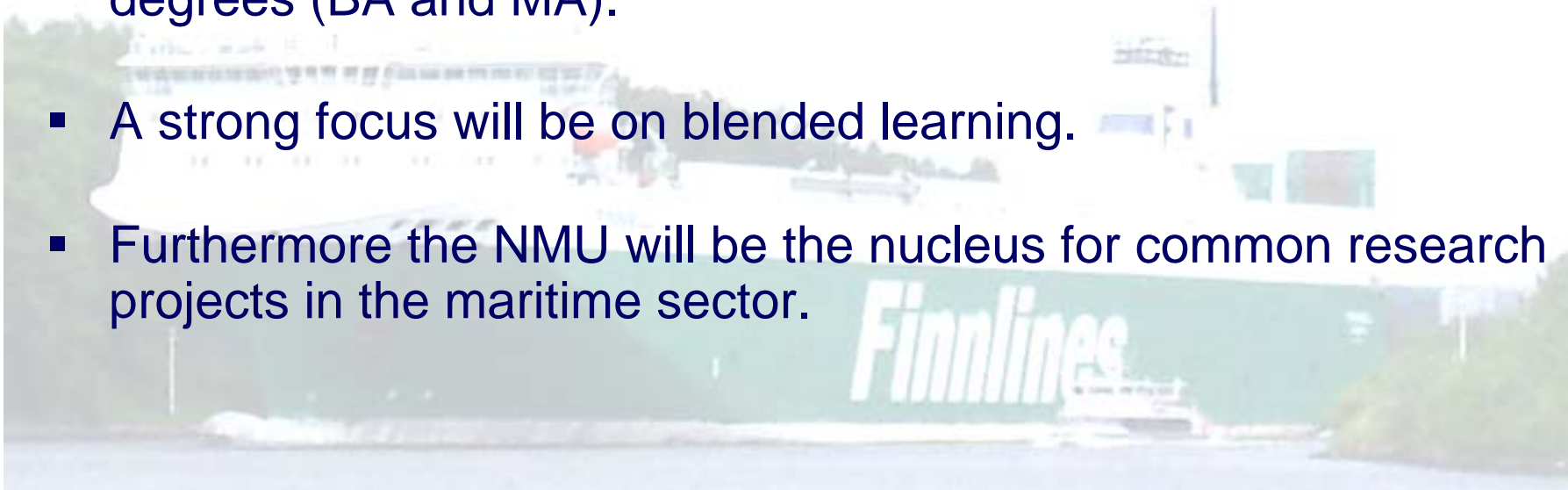
Kiel University of Applied Sciences

---

# Northern Maritime University (NMU)

## ↳ Vision

- The Northern Maritime University (NMU) will be a network of universities in the Baltic Sea Region (BSR) as well as in the North Sea Region (NSR).
- The maritime units of the participating universities will offer a range of maritime business related modules and deliver joint degrees (BA and MA).
- A strong focus will be on blended learning.
- Furthermore the NMU will be the nucleus for common research projects in the maritime sector.



# Northern Maritime University (NMU)

## ↳ Background

- The importance of maritime transport for both, the BSR and the NSR is unquestioned.
- To maintain an efficient and effective management of maritime transport, well trained managers are required.
- The NMU project seeks to increase the capacity for innovation within the maritime sectors of the BSR as well as the NSR by establishing a strong transnational network between universities dealing with maritime business management.

# Northern Maritime University (NMU)

## ↳ Approach

1. Search for competent university partners in the NSR and BSR.
2. Creation of a harmonized curriculum for each of the NMU's educational programs in coordination with the maritime economy.
3. Identification of existing e-learning modules.
4. Development of new e-learning modules.
5. Implementation of a NMU-management-structure for public relations, exams, etc.
6. Accreditation of the NMU educational programs.

# Northern Maritime University (NMU)

## ↪ Use of existing resources



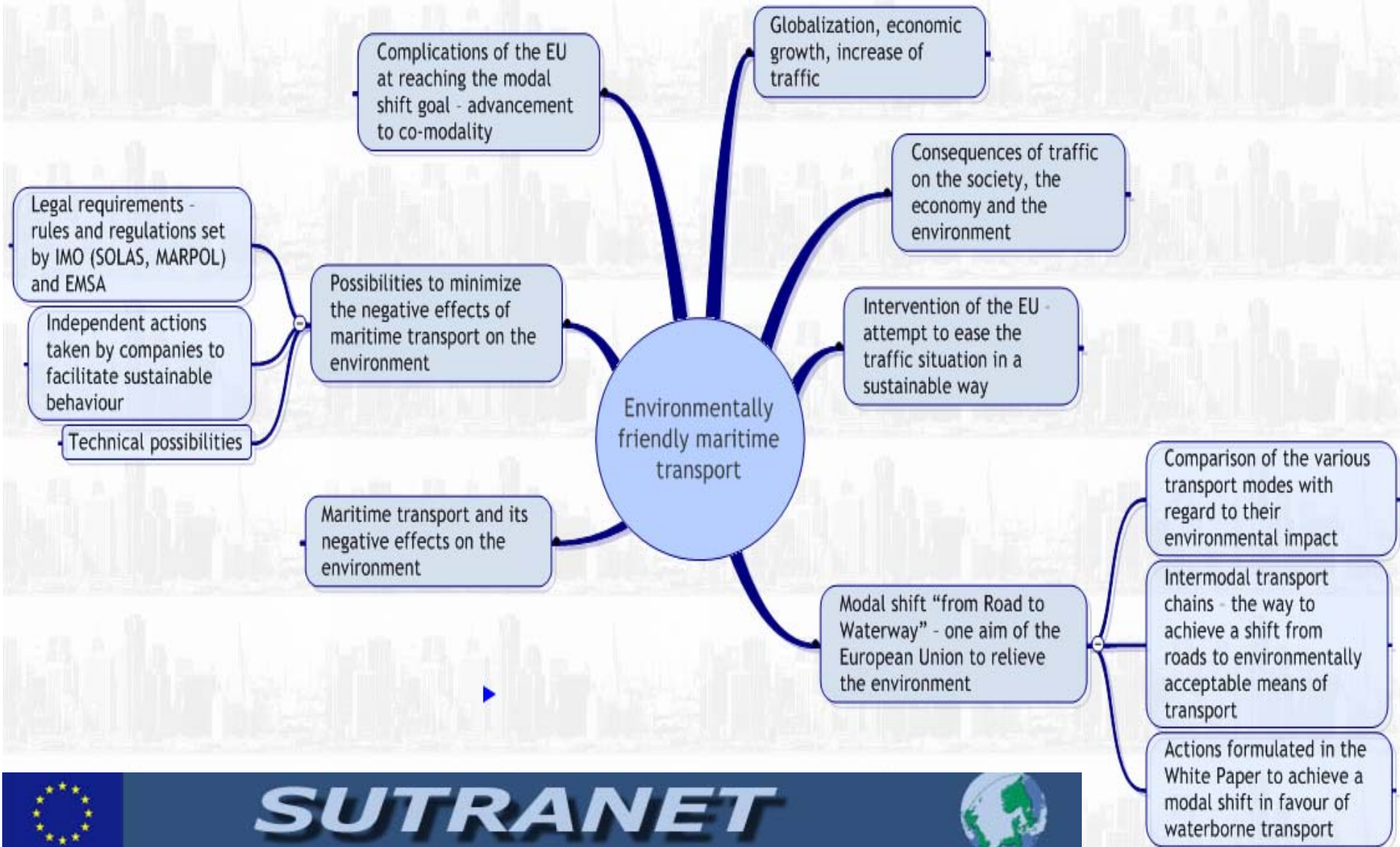
- The NMU is able to extend or directly use e-learning modules that will be or have already been developed by INTERREG-Programmes (e.g. “Short Sea Shipping” by REMARCC and “Environmentally Friendly Maritime Transport” by SUTRANET\*).
- The Baltic Sea Virtual Campus may serve as a proven and easily extendable platform for the NMU.\*\*

\* SUTRANET workpackage 4 dvpld. by Kiel University of Applied Sciences

\*\* Cp. Baltic Gateway Final Report.

# Northern Maritime University (NMU)

## ↳ Example of an e-learning module





# Northern Maritime University (NMU)

## Example of an e-learning module

### Introduction

This first chapter aims at providing the reader with definitions of some fundamental transport and environmentally related terms.

An outline of the broad field of transport and environment will be drawn and the e-learning module will focus on the subject of environmentally friendly maritime transport.

At the very beginning of this e-learning module a deeper understanding for transport, economical and environmental issues and the connection between these issues is sought. The reader is to be enabled to comprehend the vital importance of transportation as well as the environmental damage resulting from it. The following chapters will relate to these definitions and insights.



**Illustration 1: Port of Hamburg.**

Source: Neumann.

# Northern Maritime University (NMU)

↙ Partners?

## NMU – NSR

*Interreg IV B North Sea*

- **Aalborg University (DK)**
- **Elsfleth (FH OOW, D)**
- **HS Bremerhaven (D)**
- **Napier University Edinburgh (GB)**
- **Molde University College (N)**
- ...
- ...
- ...

## NMU – BSR

*Interreg IV B Baltic Sea Region*

- **Baltic Sea Virtual Campus (BSVC)**  
with cooperating universities
- **Baltic Sea Network** (30 partners,  
e.g. Gdansk University)
- **FH Flensburg**
- **CAU Kiel** (Geography, Maritime Law)
- **University Gothenburg** (projects  
“Lighthouse“ and “Nordic Master“)
- ...
- ...
- ...



# Northern Maritime University (NMU)

## ↳ Reference to the Baltic Sea Programme

---



1. Fostering of innovations.
2. Internal and external accessibility.
3. Baltic Sea as a common resource.
4. Attractive and competitive cities and regions.

# Northern Maritime University (NMU)

## ↳ Reference to the North Sea Programme

---



1. Increase the overall level of innovation taking place across the North Sea region
2. Enhance the quality of the environment in the North Sea region.
3. Improve the accessibility of places in the North Sea region.
4. Deliver sustainable and competitive communities.

# Northern Maritime University (NMU)

## ↳ Reference to European Maritime Policy\*



1. To broaden the knowledge base.
2. To improve competitiveness and employment perspectives of the maritime economy:
  - Enabling a continuous education in maritime fields of training by sufficient university-level teaching capacities.
  - Development of long-term concepts for the support of education and promotion of career opportunities in the maritime sector.

\* Cp. Kiel Conference's 10-Point-Roadmap for an Integrated European Maritime Policy

# Northern Maritime University (NMU)

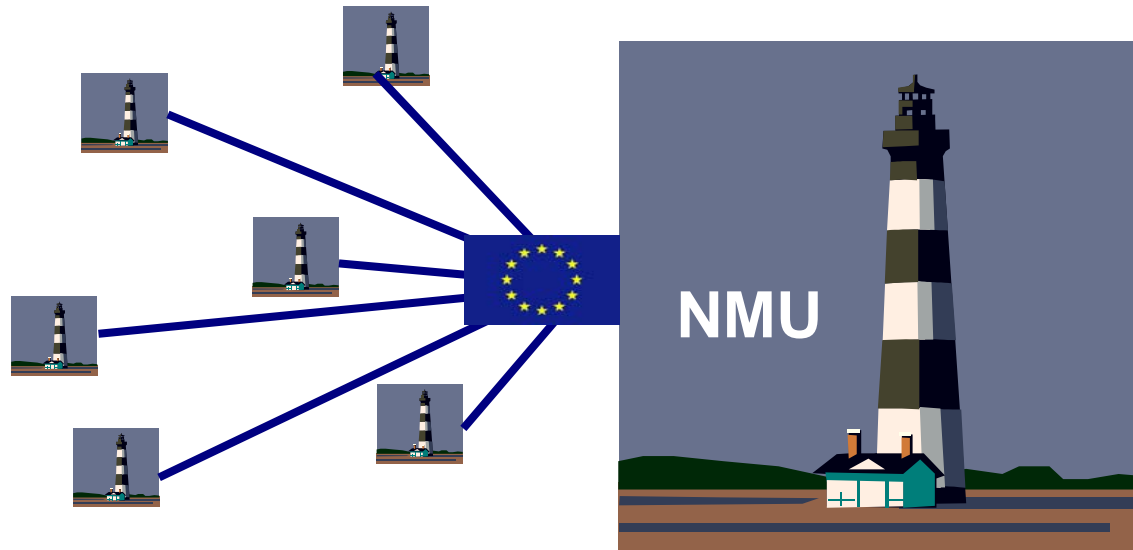
## ↪ Next Steps



1. 1st INTERREG -Application Workshop in Kiel (May 2007).
2. Feedback regarding intention of participation of the potential partners (ongoing)
3. Contacts to the regional contact points of the programme and the INTERREG secretariat Rostock (and Viborg) (ongoing)
4. 1st draft of the INTERREG application (June – September 2007)
5. 2nd Workshop (October 2007, Kiel)
6. 2nd draft of the INTERREG application (November / December 2007)
7. Final commitment of partners (January 2007)
8. Submission of the application (February 2007)

# Northern Maritime University (NMU)

↪ Let's share our resources!



Prof. Dr. Thomas Pawlik, FH Kiel, FBW, Sokratesplatz 2, D-24149 Kiel

thomas.pawlik@fh-kiel.de ☎ +49-431-210-3609 📠 +49-431-210-6-3609